



Capabilities Statement

Competitive Advantage

Registered Quality System (AS9100 & ISO9001)

Over 50 Years Operating History

SBA Small Business & HUBzone Certified Company

Proven Management Staff

Integrated And Vast Supply Chain

Short Lead Time Prototypes

Extremely Responsive to Customer Needs

Quality System & Approvals

ITAR, EAR, DFARS, SAM, EXOSTAR Registered

DLA Troop Support Class 2 Threaded Fastener Qualified

Source Inspection Delegated (Dock-to-Stock)

Statistical Process Control Network

Automated Coordinate Measuring Machines (CMM)

OASIS and Keyence Shadow Optical Measuring Devices

Equipment

Automatic Screw Machines	50
Swiss CNC	7
CNC Turning	50
CNC Milling	48
Secondary & Shop Support	90
Production Grinders / Hones	11

Turning

Screw Machines: single- and multi-spindle

CNC Lathes: 2- & 4-axis; Driven tools Y-axis

CNC Swiss screw machines

Grinding & Honing

CNC OD & Centerless Grinding

Honing & Sunnen Hones

Website

www.alardengineering.com

Facilities (sq.ft)

Buildings (5 total)	50,000
Manufacturing	38,000
General Offices	5,000
Shipping & Receiving	5,000
Inspection & QC	1,700
Chemical Storage	300

Milling

3-, 4-, & 5-Axis machines

Trunnion Table 5-Axis, 5-Sided Machining

CNC Pallet Changes; Pallet Pools

Vertical & Horizontal Mills

Full 2nd Op and Assembly Capabilities

TIG Welding, Deburring, Polishing, Tumbling, Riveting, Helicoils, Press Bushings, amongst others

Address & Phone

1629 W 132nd St, Gardena, CA 90249

310.323.4374



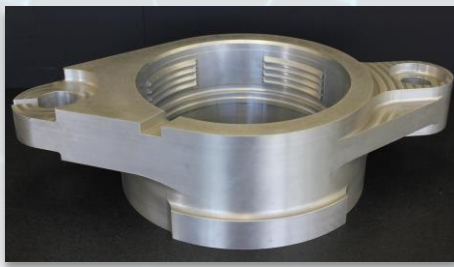
ALARD ENGINEERING

Notable Parts and Machines

Parts

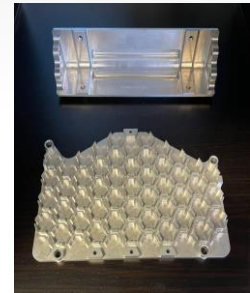
Connectors

Manifolds / Actuator Components



Inconel

Electromagnetic / Fusion



Machines

Turning

Milling

TSUGAMI	B0205-II	5-Axis	Mori Seiki	NMV-5000 DCG	29" x 20" x 20"
Mori-Seiki	NLX-2500SY	16" x 10"	Mori Seiki	NH-50000/40	29" x 29" x 34"
Okuma	LU3000EX	12" x 24"	HAAS	SUPER VF-6SS	64" x 32" x 30"

Key Contacts

sales@alardmachine.com

Address & Phone

1629 W 132nd St, Gardena, CA 90249
310.323.4374